



## Specification Data

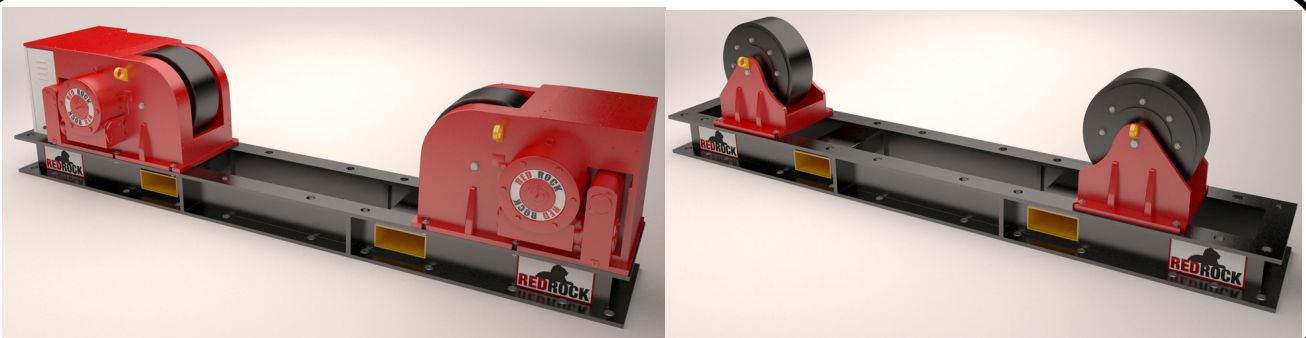
Conventional Rotators  
Capacity : 300 tonnes  
MODEL: RWPS300/300-31-FM-WE  
Fitted with steel wheels

**RedRock** rotators are a robust heavy duty design built to withstand the harsh and rugged environments expected in the world of welding and fabrication requirements. Our proven design uses 660mm diameter 250mm width, steel wheels crowned and hardened mounted onto a cast steel drum for durability and superior traction.

The powered drive unit drives all wheels synchronized using the AC gear motors via the latest inverter control. A hand held low voltage control pendant on a 10 metre cable provides the operator with full control of the rotator including a potentiometer for varying the speed, forward/reverse and stop.

All **RedRock** rotators are grit blasted to SA 2.5 for all structural steel and polyurethane paintwork ensuring that your investment provides you with many years of reliable, trouble-free use.

The idler roll has the same dimension to match the powered drive unit. See GA drawing attached.

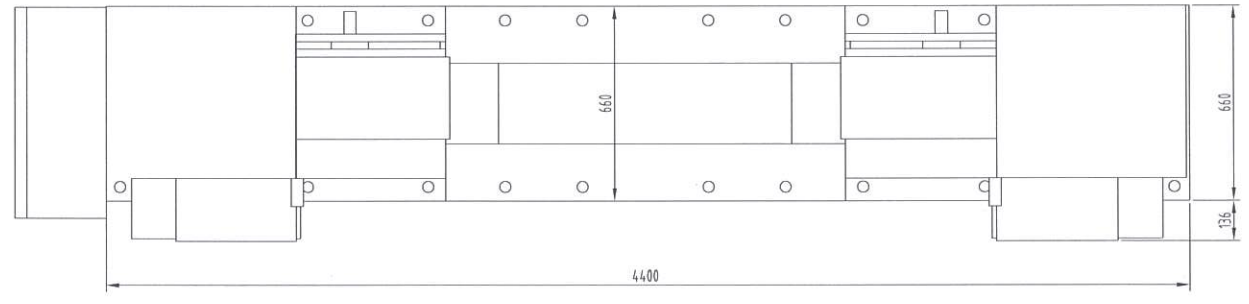
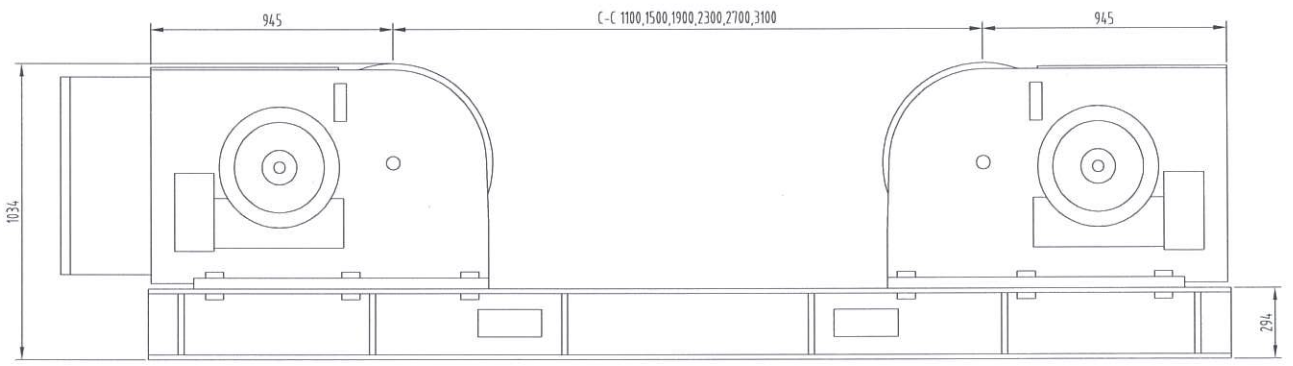


### Power rolls specifications

|                    |   |
|--------------------|---|
| Model:             | RWPS300/300-31-FM-WE  |
| Load Capacity:     | 300 metric ton (1 power & 1 idler)                                  |
| Rotation Capacity: | 300 metric ton (1 power)  |
| Rotation Speed:    | 186 to 1860mm/min   |
| Vessel diameter:   | Min 1540mm to Max 7440mm (at 3100mm C-C) @ 45 degree included angle |
| Incoming supply:   | 380-415V/3Phase/50/60/hz (specify input voltage when ordering)      |
| AC Inverter:       | 15 kW   |
| Motor rating:      | 2 x 7.5 kW AC Motors  |
| Control voltage:   | 24V low voltage control   |
| Weight:            | 3,870 Kg Drive Unit<br>3,870 Kg Idler Unit                          |

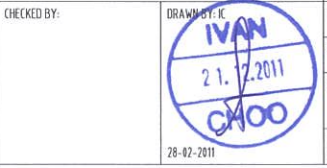
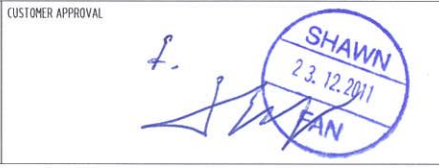
| Specifications for Rotator |                     |   |
|----------------------------|---------------------|---|
| 1                          | Model               | RWPS300-300-31-FM-WE                                      |
| 2                          | Loading Capacity    | 150 MT  |
| 3                          | Turning Capacity    | 300 MT  |
| 4                          | Vessel Size Min.    | Ø1540mm at 60° Included Angle, at C-C 1100mm              |
| 5                          | Vessel Size Max.    | Ø7440mm at 45° Included Angle, at C-C 3100mm              |
| 6                          | Tyre Type & Size    | Steel Wheel, Ø660mm x 250mm,                              |
| 7                          | Roller Speed        | 186~1860mm/min at 5~50Hz                                  |
| 8                          | Roller Drive Motor  | 2x AC 7.5kW Motor c/w Force Cooling                       |
| 9                          | Travel Car          | No  |
| 10                         | Travel Car Speed    | N.A.  |
| 11                         | Travel Car Drive    | N.A.  |
| 12                         | Drive Control       | AC 15kW Inverter  |
| 13                         | Electrical Panel    | Yes   |
| 14                         | Incoming Supply     | 380/400/415V-3P-50Hz or 440/460/480V-3P-60Hz <sup>1</sup> |
| 15                         | Control Voltage     | 24Vac   |
| 16                         | Control Means       | Via Push Button Pendant c/w 10m Cable                     |
| 17                         | Surface Preparation | Gritblast to SA2.5  |
| 18                         | Painting            | Lead Free, 2 Zinc Phosphate, 1 Coat Polyurethane          |
| 19                         | Colour              | RAL3003 RED & RAL9005 BLACK for Skid only                 |
| 20                         | Qty                 | 2 Units   |
| 21                         | Weight              | ~3870kg   |
| 22                         | Shipping Size       | 440 x 80 x 105 cm   |

Note:  
 1. Input terminals are wired for 400V by default.  
 2. This drawing is accurate at the time of preparation and maybe subject to final design change.



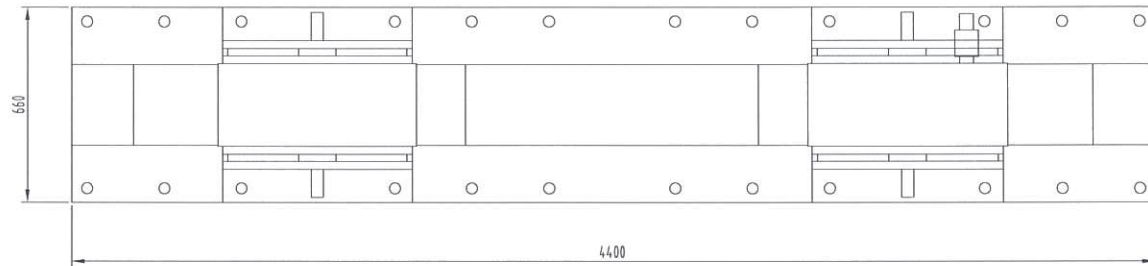
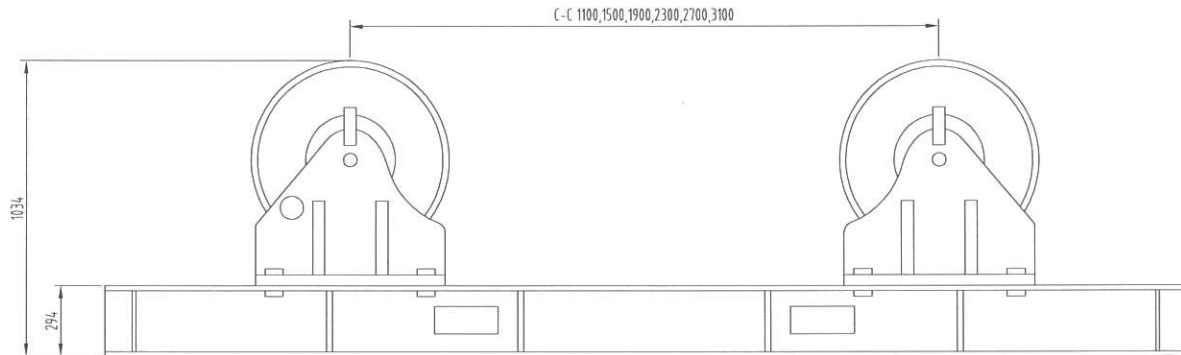
| REV | DATE     | DESCRIPTION                   | EDIT BY | REMARKS |
|-----|----------|-------------------------------|---------|---------|
| 3   | 21-12-11 | As Built                      | K       |         |
| 2   | 01-06-11 | Update on skid width          | K       |         |
| 1   | 07-04-11 | Update on the vertical height | K       |         |

All dimensions in mm unless otherwise specified.



|  |  |               |  |
|--|--|---------------|--|
| CUSTOMER:  |  | SCALE: N.T.S. |  |
| DRAWING NAME: Rotator 300MT Power  |  | REVISION: 3   |  |
| DRAWING NO.: PD-0053-GA09  |  | SHEET: 1 OF 1 |  |
| THE ORIGINAL AND ALL COPIES OF THIS DRAWING TOGETHER WITH THE COPYRIGHT THEREOF ARE THE SOLE PROPERTY OF RED ROCK. DESIGN AND SPECIFICATIONS ARE SUBJECT TO CHANGE WITHOUT PRIOR NOTICE. |  |               |  |

| Specifications for Rotator |                       |  |
|----------------------------|-----------------------|--|
| 1                          | Model                 | RWIS300-31-FM                                    |
| 2                          | Loading Capacity      | 150 MT   |
| 3                          | Turning Capacity      | N.A.   |
| 4                          | Vessel Size Min.      | φ1540mm at 60° Included Angle, at C-C 1100mm     |
| 5                          | Vessel Size Max.      | φ17440mm at 45° Included Angle, at C-C 3100mm    |
| 6                          | Tyre/Drum Type & Size | Steel Wheel, φ660mm x 250mm                      |
| 7                          | Roller Speed          | N.A.   |
| 8                          | Roller Drive Motor    | N.A.   |
| 9                          | Travel Car            | No   |
| 10                         | Travel Car Speed      | N.A.   |
| 11                         | Travel Car Drive      | N.A.   |
| 12                         | Drive Control         | N.A.   |
| 13                         | Electrical Panel      | N.A.   |
| 14                         | Incoming Supply       | N.A.   |
| 15                         | Control Voltage       | N.A.   |
| 16                         | Control Means         | N.A.   |
| 17                         | Surface Preparation   | Gritblast to SA2.5                               |
| 18                         | Painting              | Lead Free, 2 Zinc Phosphate, 1 Coat Polyurethane |
| 19                         | Colour                | RAL3003 Red & RAL9005 Black for skid only        |
| 20                         | Qty                   | 2 Units  |
| 21                         | Weight                | ~3870kg  |
| 22                         | Shipping Size         | 440 x 66 x 105 cm                                |



Note:  
1. This drawing is accurate at the time of preparation and maybe subject to final design change.



All dimensions in mm unless otherwise specified.

| REV | DATE     | DESCRIPTION                         | EDIT BY | REMARKS |
|-----|----------|-------------------------------------|---------|---------|
| 3   | 21-12-11 | As Built                            | IC      |         |
| 2   | 01-06-11 | Update on the skid length and width | IC      |         |
| 1   | 07-04-11 | Update on the dimensions            | IC      |         |



CUSTOMER APPROVAL

CHECKED BY:  
 DRAWN BY:  
  
 28-02-2011

|  |                     |                    |
|--|---------------------|--------------------|
| CUSTOMER:  |                     | SCALE:<br>N.T.S.   |
| DRAWING NAME:  | Rotator 300MT Idler | <br>REVISION:<br>3 |
| DRAWING NO.:   | PD-0053-GA10        |                    |
| THE ORIGINAL AND ALL COPIES OF THIS DRAWING TOGETHER WITH THE COPYRIGHT THEREOF ARE THE SOLE PROPERTY OF RED ROCK. DESIGN AND SPECIFICATIONS ARE SUBJECT TO CHANGE WITHOUT PRIOR NOTICE. |                     | SHEET:<br>1 OF 1   |